

# THE SHOPPES AT LAKE PARK

## Project Location:

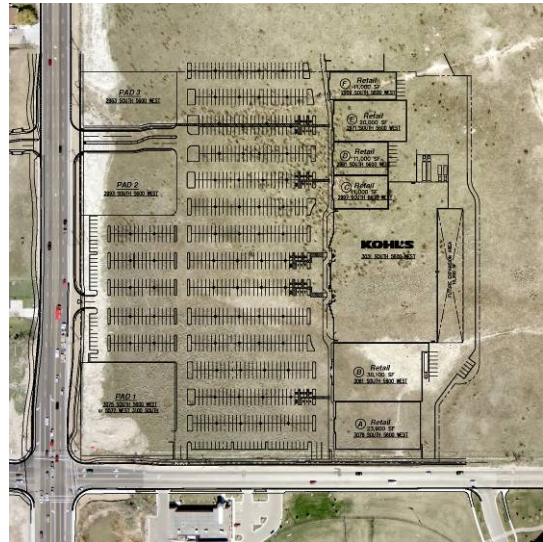
- West Valley City, Utah.

## Project Size:

- 19.7 Acres

## Project Design Features:

- Retail shopping center
- Phased development
- Large Kohl's department store with retail strip
- 511 total parking spaces
- 110,000 S.F retail building space
- 75,000 SF of landscape design
- 1,900 LF of adjacent roadway improvements
- 3 additional retail building pads



## Dominion is responsible for the following:

- Topographic surveying
- Drainage and grading design
- Paving and striping plans
- Adjacent roadway improvement plan and profiles
- Utility Plans
- Landscape and irrigation design
- Bid package preparation and construction observation
- Construction staking