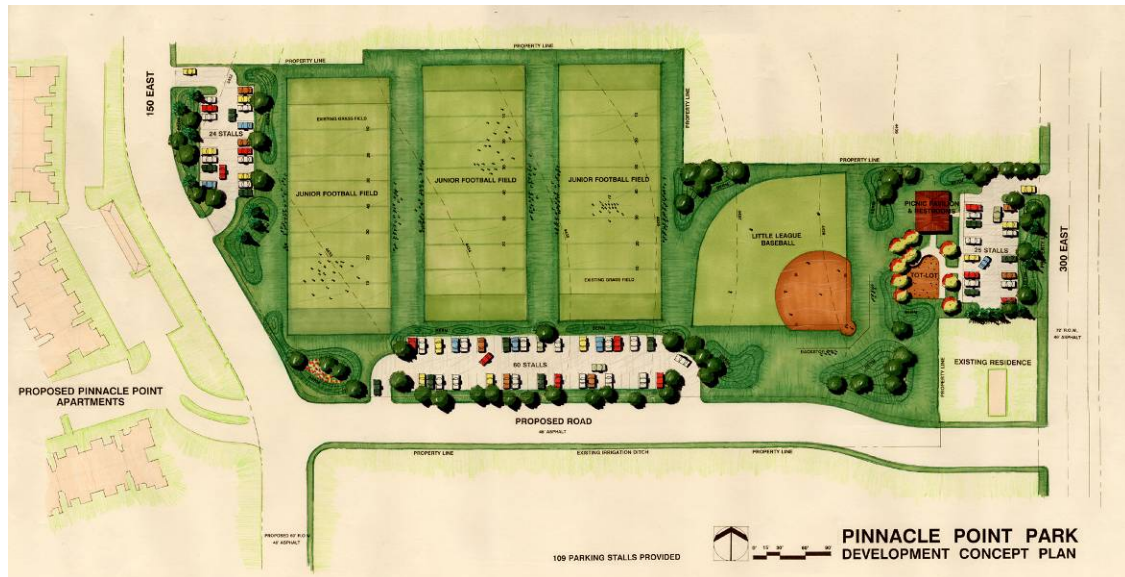


# PINNACLE POINT PARK



## Project Location:

- Draper, Utah

## Project Size:

- 9 Acres

## Client:

- Johansen -Thackeray

## Project Design Features:

- Little league baseball field
- Junior football fields
- Picnic pavilions
- 109 Parking stalls

Dominion is responsible for the following:

- Conceptual layout and design of park amenities and parking lots

Design Team consists of:

- Dominion Engineering



Picnic pavilion and playground



Baseball field and football fields