

STONE CREEK RANCH

Project Location:

- Wasatch County, Utah

Project Size:

- 40 Acres & 38 Lots

Client:

- Lake Creek 40, LLC

Project Design Features:

- Park with Amenities
- Adjacent parking for park
- Trail System with 6 Fitness Stations
- Stream Enhancements
- Open Space Amenities
- Trail Overlook

Dominion is responsible for the following:

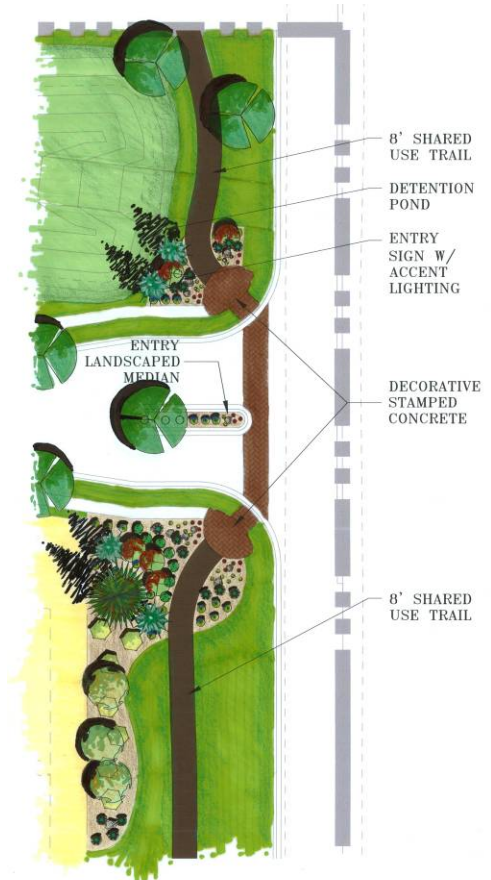
- Hydrology studies and evaluation
- Site grading and drainage design
- Site circulation design
- Engineering of hardscape and utilities
- Surveying
- Platting
- Landscape and general irrigation design

Design Team consists of:

- Dominion Engineering
- Gray Graphics (Architecture)
- Earthtec (Soils & Geotechnical)
- Lone Goose (Wetlands)



Site Plan



Entry Enhancements